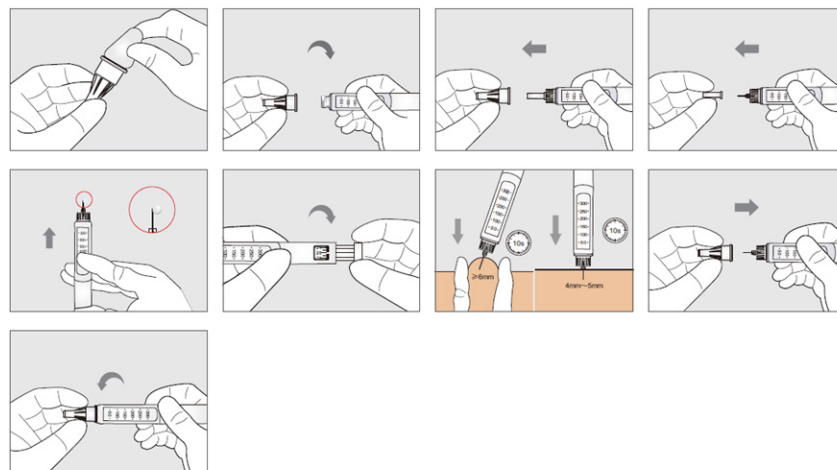


BV Insulin Pen Needle

A universal screw fit insulin pen needle designed for comfort with optimal insulin delivery.



User Instructions



Step by Step Guide

Model	Gauge	Depth	Colour
AMTL-3204	32G	4mm	Green
AMTL-3105	31G	5mm	Blue

Please clean and dry a test site before commencing

- 1 Rip the sealing film off the housing.
- 2 Align the end needle tube in the needle seat with the pen core and tighten it on the insulin injection pen.
- 3 Carefully remove the casing.
4. Carefully remove the sheath. Avoid bending the needle when removing the sheath. Discard the sheath.
5. With the needle tip facing up, flick the injection pen to let the bubbles float to the top, and press the injection button until the liquid is discharged from the needle tip.
6. According to the instructions for use of the insulin pen, select the injection dose of insulin medicine on the insulin pen.
7. After cleaning the injection site, choose a suitable injection method to insert the needle. Press the injection button to the bottom and hold it for at least 10 seconds before pulling out the needle.
8. Install the shell on the used insulin needle.
9. Unscrew the needle.