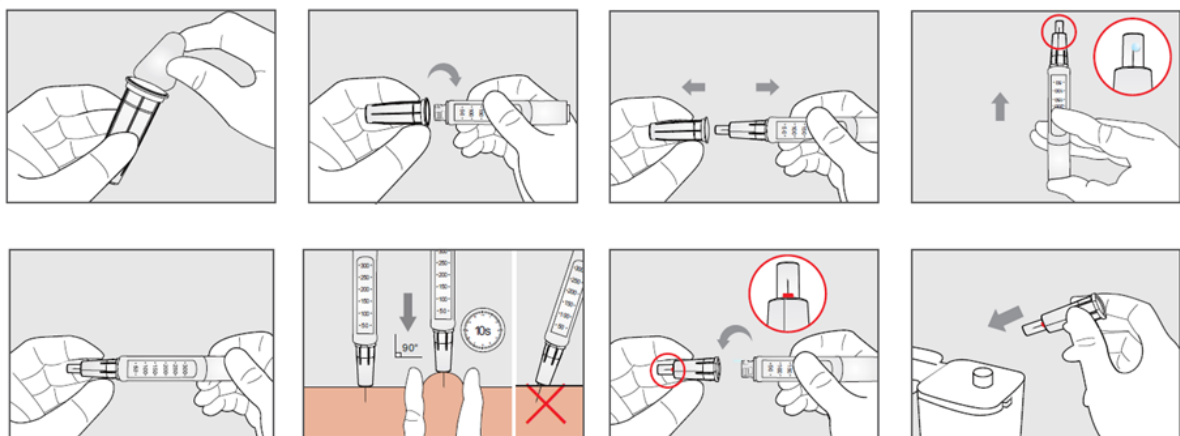


Pro-Shield Safety Insulin Pen Needle

A universal screw fit insulin pen needle designed for safety to protect healthcare professionals and carers from needle stick injuries.



User Instructions



Step by Step Guide

Model	Gauge	Size	Colour
AMTL-3104S	31G	4mm	Yellow
AMTL-3005S	30G	5mm	Grey
AMTL-3008S	30G	8mm	Blue

Please clean and dry a injection site before commencing

A skinfold should always be utilised when using needle lengths longer than 5mm to prevent injecting into the muscle. Always follow injection technique demonstrated by your healthcare professional

1. Take the sealing paper off the pen needle
2. Attach the pen needle by screwing it on to the insulin pen, making sure it is on straight
3. Remove the outer plastic needle container
4. Prime the insulin pen according to the pen instructions for use. Check the flow. A drop of liquid should appear at the needle tip. This can be seen through the clear protective shroud. Please note that a priming droplet may remain and be left on the skin after injection
5. Select the dose prescribed by your healthcare professional
6. Push the needle protective jacket against taut skin (at a 90° angle) following the injection technique demonstrated by your healthcare professional. The protective jacket will retract and allow the needle to penetrate the skin. To ensure a firmer surface at the injection site, you can pinch up the skin to create a skinfold
7. Do not change the direction of the needle when it is still in the skin to avoid bending
8. After the injection, hold the needle in place for 10 seconds before removing the needle from the skin
9. On withdrawal from the skin, the clear protective shroud will lock over the needle (preventing the needle being exposed), the red indicator will confirm that the safety mechanism has been activated and the needle cannot be used again.