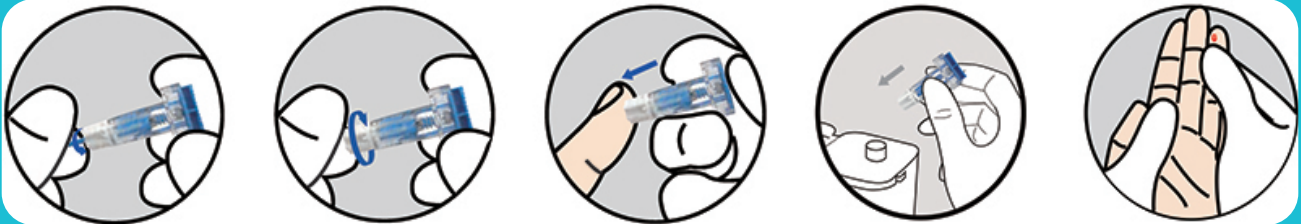


Tri-Plus Adjustable Depth Safety lancet

An easy to use, ergonomic T shaped lancet with a choice of three puncture depths, designed with safety to protect healthcare professionals and carers from needle stick injuries.



User Instructions



Step by Step Guide

<i>Model</i>	<i>Gauge</i>	<i>Depth</i>	<i>Colour</i>
AMTL-2303	23G	1.3/1.8/2.3mm	
AMTL-2803	28G	1.3/1.8/2.3mm	

Please clean and dry a test site before commencing

1. Twist off the protective cap, and pull it straight out
2. Turn the knob to the appropriate blood collection depth – choice of 3 depths
3. Push the safety lancet down against the test site and press the button to activate the lancet
4. Once used, simply discard the lancet into an appropriate container