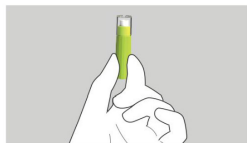


Pressure Activated Safety Lancet

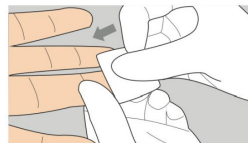
An easy to use, ergonomic lancet designed for safety to protect healthcare professionals and carers from needle stick injuries.



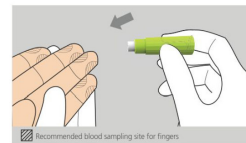
User Instructions



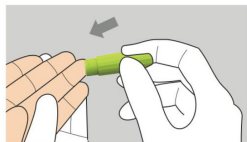
1. Wash your hands and prepare a safety lancet.



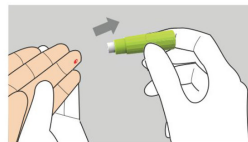
2. Simply clean the test site and air dry, then remove the protective cap from the lancet.



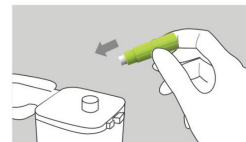
3. Place white raised end of the lancet on the test site.



4. Gently push the lancet down against the test site to activate the lancet.



5. Wait for blood to flow out naturally. If the blood flow is not smooth, slowly press the root of finger to make the blood flow out.



6. Discard the used lancet into the sharp container.

Step by Step Guide

Model	Gauge	Depth	Colour
AMTL-2618	26G	1.8mm	Yellow
AMTL-2818	28G	1.8mm	Blue

Please clean and dry a test site before commencing

1. Choose safety lancet
2. Remove the protective cap
3. Place white raised end of the lancet on to the test site
4. Gently push the lancet down against the test sit to activate the lancet – lancet can not be reactivated
5. Wait for blood to flow out naturally
6. Discard the used lancet into an appropriate container