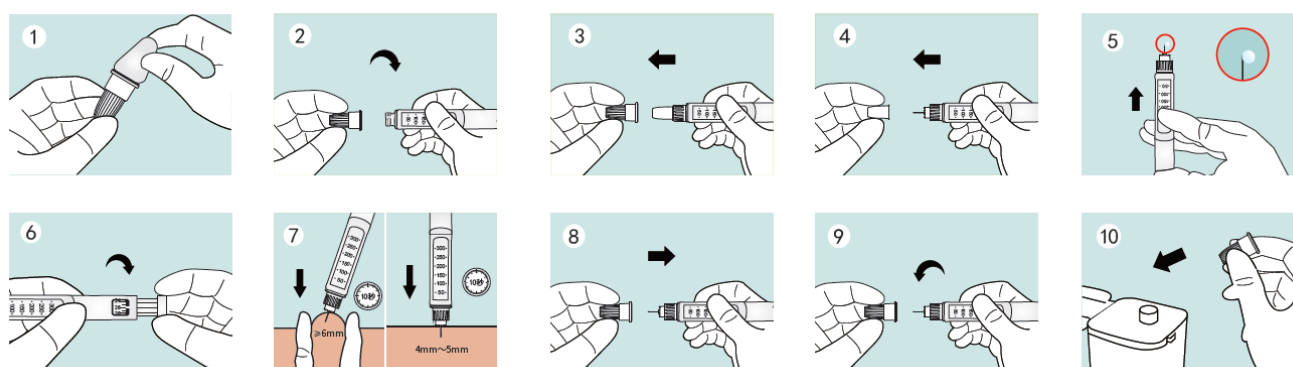


Sensitive Insulin Pen Needle

A universal screw fit insulin pen needle designed to reduce pain and discomfort with optimal insulin delivery.



User Instructions



Step by Step Guide

Model	Gauge	Depth	Colour
AMTL-SEN3304	33G	4mm	

Please clean and dry a test site before commencing

1. Peel off the sealing film (dialysis paper).
2. Align the end of the needle hub to the pen, then screw it on the insulin injection pen.
- 3/4. Remove the external protective cap and internal protective cap gently, do not bend the needle when removing the internal protective cap. Discard the internal protective cap.
5. Put the needle tip facing upwards, flick the pen to let the air bubbles float to the top, and then press the injection button until liquid is discharged from the needle tip.
6. Select the insulin drug injection dose on the insulin pen according to the instructions for use of the insulin injection pen.
7. It is recommended to disinfect the injection site with alcohol pads. Consult with your healthcare professional ahead of time about the injection technique that is right for you.
8. Do not change direction whilst the needle is in the body, otherwise it will cause the needle to bend or break.
9. After completing the injection, hold the needle in place more than 10 seconds before pulling out the needle from the skin.
10. After use, put the external protective cap on the used insulin pen needle, unscrew the needle and discard it in the sharps container.